



# YOUR NEW LIFE AWAITS

Check out your housing options!





## TOP TEN REASONS MOCS LOVE LIVING ON CAMPUS

- ⑩ The feeling of community
- ⑨ Amazing views
- ⑧ Wide variety of dining options
- ⑦ No commuting
- ⑥ Access to campus resources like the Wellness Center
- ⑤ Wi-Fi everywhere
- ④ Easy to get involved in campus activities
- ③ Free concerts, comedians, and movies minutes from your door
- ② Lake Hollingsworth
- ① Sharing good times with all your best friends

**“Much more than just a place to study and sleep,**

living on campus is about learning, growing, and helping you develop to your fullest potential.”

— Mike Crawford, Dean of Students



**The conversations that change your life are not only going to take place in the classroom. They’re going to happen with roommates and friends lingering over dinner at Wynee’s, grabbing a latte at Tutu’s, and hanging out in the lounge in Spivey late at night.**

Living on campus is about getting connected — becoming part of a community. Sharing ideas and experiences is an integral part of the Florida Southern experience, and our spaces are designed to foster those kinds of interactions.

That’s why you’ll find a variety of housing options, from traditional halls to apartments to theme-based living arrangements. And because your residence hall will be your “home away from home,” we’ve made sure that it has all the amenities you need for a comfortable and productive stay.

Florida Southern is a residential community. Our students live on campus all four years. With living environments specially dedicated to first-year students, your transition to college life is sure to be seamless.



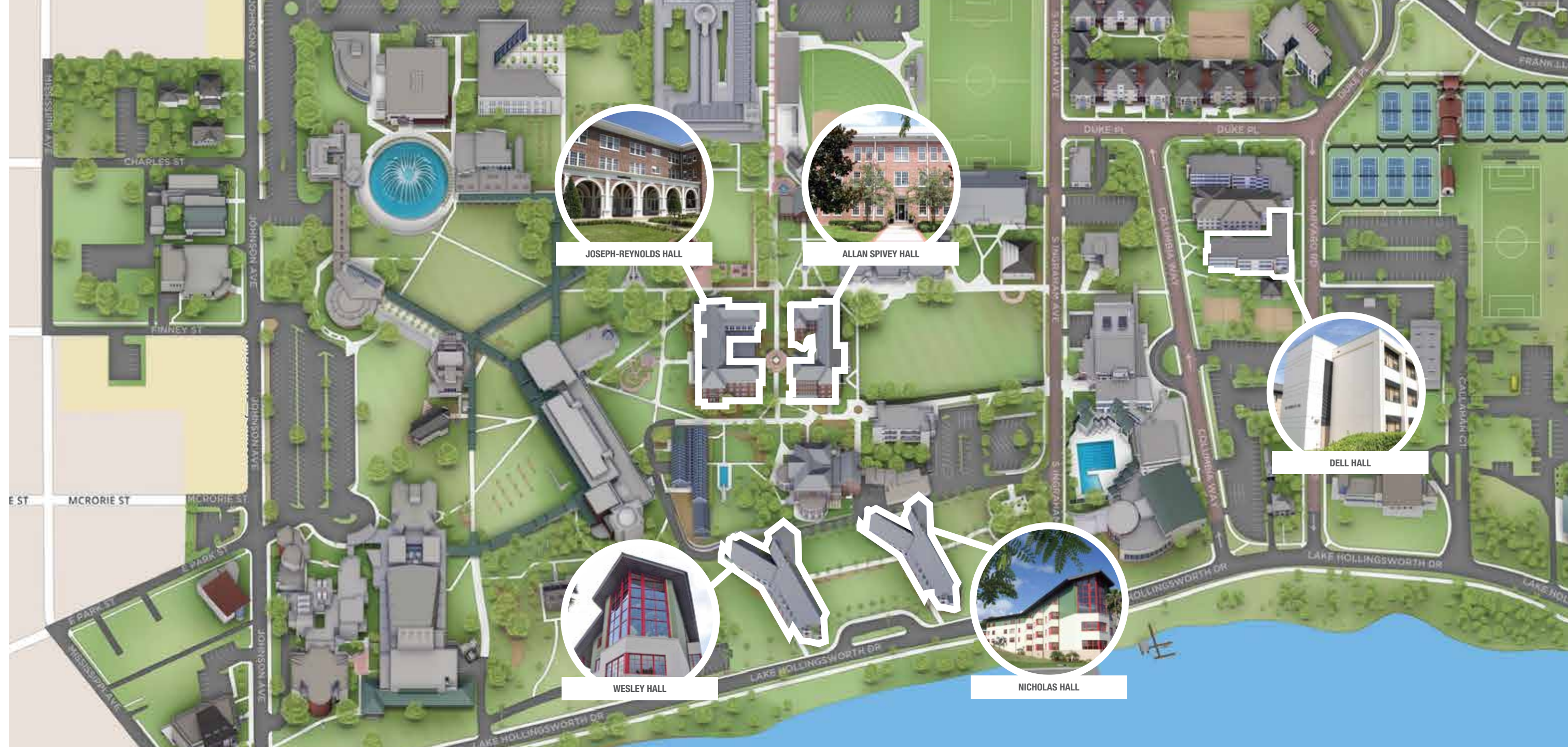
## FIRST-YEAR COMMUNITIES

In the heart of our campus community, you'll find our first-year options. You can live in one of the charming stone residence halls with on-site laundry or a modern lakefront complex with a community kitchen. You can choose a co-ed or single-sex building. Each student is provided with a bed, desk, chair, dresser, and closet. Each room comes with high-speed internet, a microwave, and mini-fridge. Whatever community you choose, you'll be in the middle of the action with quick, easy access to classrooms and labs, the library, the Wellness Center, and a variety of dining options.

**Which community is right for you?** Flip the pages or explore each space at [flsouthern.edu/housing](https://www.flsouthern.edu/housing).

**“No matter in which hall you live, you'll feel at home on our friendly campus.** You'll find plenty of opportunities to nurture friendships, learn, and explore.”

— Emma Edgar, Managua, Nicaragua





SCAN & TOUR  
JOSEPH-REYNOLDS HALL



## JOSEPH-REYNOLDS HALL

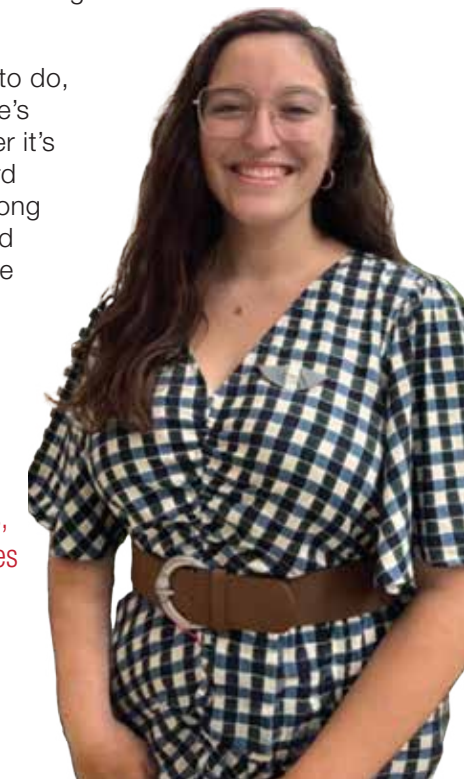
Affectionately known as “JR,” and one of the four original buildings on campus, this space combines everything you’d want in a residence hall: history, personality, and functionality. The charming brick building is even more beautiful on the inside; white archways and antique chandeliers dot the lobby, along with plenty of comfortable couches, and even a grand piano. Directly behind, you’ll find the beautiful Eleanor Searle Drawing Room, an elegant space where many campus events and banquets take place.

This all-female first-year option provides first-year women a traditional college experience. Typically two students share a furnished room with a bathroom and a common area shared between students on the floor. Community life is big here — the women of JR form connections within the building as a whole and within the wings and smaller hallways of the building.

If you’re ever looking for something to do, head down to the lobby, where there’s something always going on. Whether it’s a pizza party, movie night, or a board game competition, you will build strong relationships with your hallmates and meet some of your best friends while living in JR!

“ Being a resident advisor in JR is like having a front-row seat to a diverse and dynamic community. Every day brings new opportunities to foster connections, celebrate achievements, and make a lasting impact on the lives of those around me!”

— Avery Standifer;  
Fruitland Park, FL



## ALLAN SPIVEY HALL

Across the courtyard from Joseph-Reynolds, you'll find our all-male option. "Spivey" offers a traditional hall setting similar to the women's counterpart. With the historic nature of the building, no two rooms are entirely identical. Rooms accommodate single and double occupancy. Bathrooms are either inside the rooms (some have private baths) or are community-style, shared facilities located in the hall.

Are you looking for your roommate? No doubt he's hanging out in the nicely outfitted first-floor lounge. Equipped with a large-screen television and pool table, you can imagine that's where most Spivey residents spend their time. Of course, the hall is also very functional; the lounge is furnished with tables for quiet study, and there is a laundry room conveniently located inside the building.

Spivey residents tell us they enjoy the strong sense of community that this all-male hall offers. Resident Advisors often organize events in the lobby with free food and drinks, where everyone can gather to watch the football game or play Xbox. Living in Spivey allows you to make friendships that will last to graduation day and beyond.

**“ Being an RA in first-year living the past 3 years have been a wonderful experience, meeting residents who often become friends after their freshman year is amazing. Living in Spivey for 4 years is uber convenient to everything I use on campus.”**

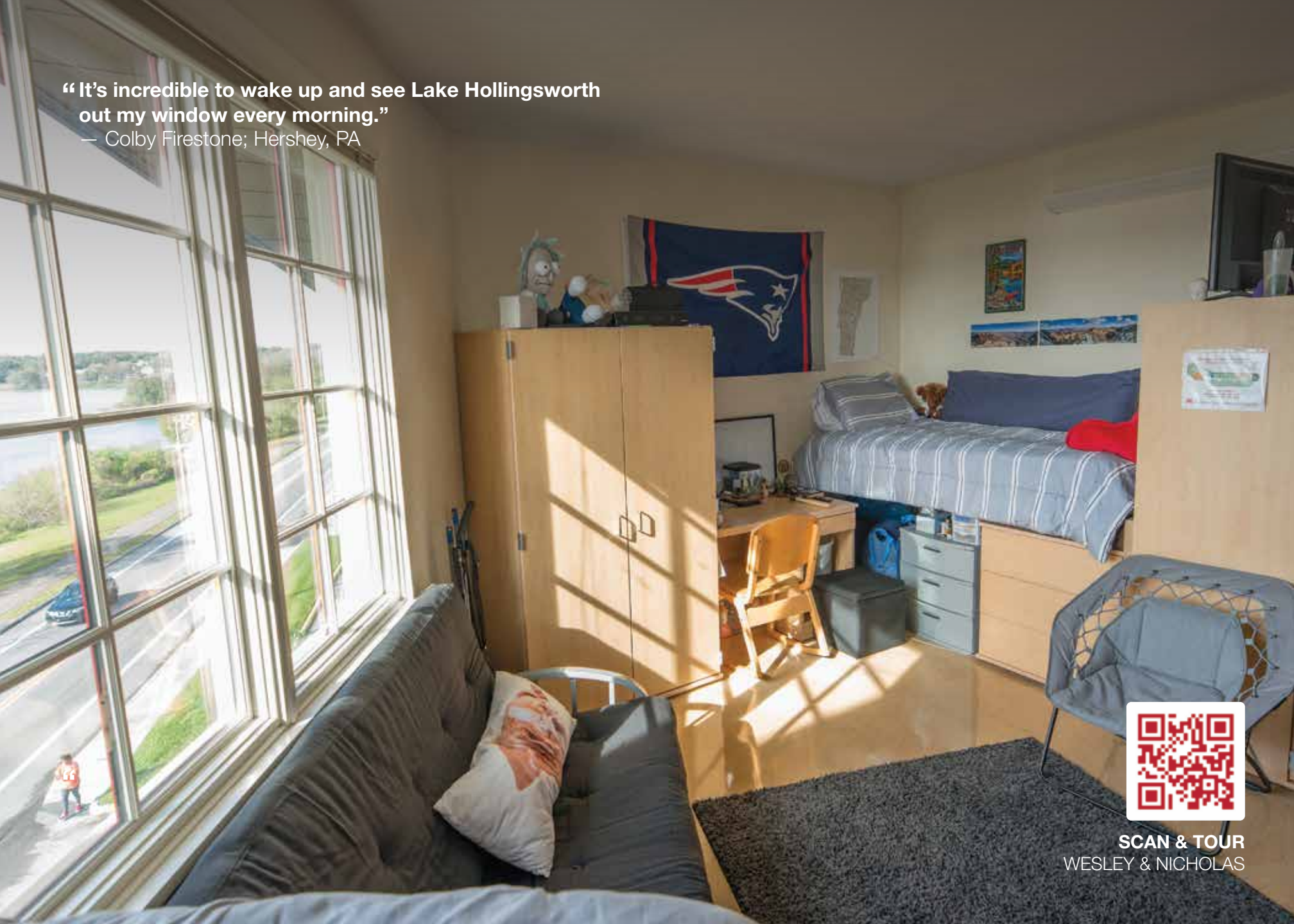
— Roman Ricardo; Dade City, FL



SCAN & TOUR  
ALLAN SPIVEY HALL



“It’s incredible to wake up and see Lake Hollingsworth out my window every morning.”  
— Colby Firestone; Hershey, PA



SCAN & TOUR  
WESLEY & NICHOLAS

## BARNETT RESIDENTIAL LIFE COMPLEX (WESLEY & NICHOLAS HALLS)

Perched on a hill over gorgeous Lake Hollingsworth, the Barnett Residential Life Complex makes for an impressive sight. These buildings are designed by world-renowned architect and Frank Lloyd Wright-enthusiast Robert A.M. Stern. What’s more impressive is the view from the inside looking out. The vantage points from Wesley and Nicholas Halls are some of the most beautiful on campus.

The Barnett Residential Life Complex has more than just breathtaking views, though; it is home to a close-knit and relaxed student community. Both males and females live in the halls, separated into gender-specific floors. The bathrooms are semi-private and shared between three to five people. These buildings also offer a laundry room, student lounges, and community kitchens.

Wesley and Nicholas’s residents love to have movie and video game nights in their comfy quarters. Traditional events in the student lounge include Super Bowl parties, pizza nights, or even potluck dinners that are cooked up in the communal kitchen. The co-ed halls create a unique and fun social atmosphere — you’ll quickly get to know many people from your classes in the Barnett community!



## DELL HALL

Conveniently located in the center of the residential area of campus, Dell is a traditional hall consisting of double-occupancy rooms with furnishings built into the design of the facility. Dell is home to both first- and second-year co-ed students fostering a communal atmosphere; the more experienced residents of Dell enjoy mentoring their freshman hallmates.

Dell Hall features a spacious lobby with a large screen television, ping-pong table, and study tables. This hall is located ideally near the bookstore, technology center, MocMart, and Wynnee's Bistro. It's adjacent to recreation options, such as the pool, fitness center, and sand volleyball court — putting its residents at the center of the action.



SCAN & TOUR  
DELL HALL



**“ Living on campus eased the transition to college life. You're immediately more plugged-in to the campus community and have more opportunities to join clubs, attend campus events, meet new people, and develop friendships. Dell residents have a stronger connection to the campus community because they are living in the center of all the action!”**

— Jollice Boyd; Brandon, FL







**Garden Apartments**, one of FSC's newest apartment complexes, consists of three-story buildings that house upperclassmen. Each unit offers three bedrooms and two full baths, an open kitchen-living area, and interior bicycle storage.

## ADDITIONAL HOUSING OPTIONS

After your first year, you'll have a wider variety of housing options from which to choose. Each provides the same positive environment and conveniences that you'll enjoy as a first-year student, including relevant and motivating programming that will continue to support you in your academic, personal, and social development. **Check out all of our spaces at [flosouthern.edu/housing](https://flosouthern.edu/housing).**

### TRADITIONAL HALLS

Hollis and Miller, along with Dell Hall, are part of a three-building complex of upperclassmen located on the east side of campus. Hollis Hall is a traditional residence hall that is co-ed by floor and offers double occupancy rooms and community bathrooms. Miller Hall offers two-room suites, a single and double room with a shared bathroom.

**When you become a Moc, you become part of an extended family — filled with smart, talented individuals for you to learn from and lean on as you transition into a new, more independent life!**

### GREEK VILLAGE

The hub of Greek life activity, Greek Village connects fraternity and sorority members to each other and with other Greek organizations. The complex, comprised of Jenkins Hall and Publix Commons, offers both suite living and traditional-style housing with community bathrooms. Jenkins Hall has a spacious lobby outfitted with a big-screen television and pool table. Chapters work with members to assign housing within their assigned block; however, not all residents are members of a fraternity or sorority. These buildings are open to all second-year students and above.

### APARTMENT-STYLE LIVING

Enjoy increased independence in one of our off-campus apartment complexes — Lake Morton, Colony Arms, Lake Hollingsworth, Star, and Garden Apartments. With the farthest complex less than five minutes away, you get the best of both worlds — an easily maintained presence on campus along with a greater connection to the Lakeland community. All of our buildings are in safe and protected locations. Shuttle service is provided between campus and the apartment communities Monday through Friday from 7 a.m. to 11 p.m. After hours, you can call upon Campus Safety for a lift home.

## HOW WE SELECT YOUR ROOMMATE

Rest assured, you'll have one thing in common with your roommate — they are just as nervous about sharing a room as you are. Statistics indicate that most first-year students have never had to share a room!

The Office of Community Living makes room assignments based on the information you provide on your **Housing Portion of your new student enrollment form**. Every effort is made to place you in your preferred space, and pair you with someone who appears to have similar interests, study habits, and overall lifestyle. How we match you depends on how you fill out the form, so take the time to fill out the survey accurately. Please, don't let Mom do it.

Looking for a roommate? ZeeMee has a simple feature to help you find one. Download the app and make sure to join FSC's ZeeMee community. Complete your profile and take the 10-question quiz about what you want in a roommate. After you take the quiz, potential "matches" will pop up!

If you decide you want to live with a friend, you **both** must request each other as roommates on your Housing Form.



## FREQUENTLY ASKED QUESTIONS

### Are first-year students guaranteed housing?

Yes. Florida Southern is a residential community. Students coming from more than 30-miles away are expected to live on campus. Housing is available year-round, although on a limited basis in designated areas between the academic semesters.

### Can I bring a car to campus?

Yes, first-year students can bring a car to campus. While it's not necessary to have a car at FSC, parking is available for students living on campus. A shuttle system is also available and serves on- and off-campus housing. Parking information is available at [flosouthern.edu/parking](https://flosouthern.edu/parking).

### How does dining work on campus?

The first-year student meal plan, called the 20 Meal Plan, provides six (6) Swipes every Monday that can be used toward any meal at Wynee's Bistro. Students on this plan also receive 126 Snake Bites a week to purchase food at Wynee's or any other on-campus venue. In addition to Swipes and Snake Bites, students receive \$50 additional Flex Dollars every semester.

### Which residence hall is the best?

All of our residence halls offer the same great staff, support, and are close to all campus resources. See [flosouthern.edu/housing](https://flosouthern.edu/housing) for additional details about each space.

### When will I receive my housing assignment?

Students who submit their Enrollment Deposit\* and complete their housing preferences (via the New Student Enrollment Form) by April 1 will receive their housing assignment and roommate info on our June 1 Match Day! Students who submit their deposit and form after April 1 will receive their assignment in July.

### What are my chances of getting the housing assignment I want?

We make every effort to place students according to their preferences. Unfortunately, we cannot accommodate everyone's first choice, as there are a finite number of spaces. We ask that new students keep an open mind regarding hall assignments, as each hall has a positive atmosphere with unique characteristics. We also encourage you to make sure to rank your choices based on your highest priorities and deposit early!

### What if I do not like my roommate?

Living in a shared space can present its fair share of challenges, but it is important to be fair, honest, and considerate with one another. If you find yourself with a concern, communicate with your roommate and if needed, make sure you discuss your concerns with your Resident Advisor (RA).

\* You have until the National Candidate Reply Date of May 1 to submit your Enrollment Deposit. Students who submit their Enrollment Deposit after April 1 will receive equal consideration for housing placement.



Office of Admissions  
111 Lake Hollingsworth Drive  
Lakeland, FL 33801-5698  
[flsouthern.edu](http://flsouthern.edu)



NON PROFIT ORG  
U.S. POSTAGE  
**PAID**  
PERMIT #38  
LAKELAND, FL

SEE YOU SOON!



## Which FSC community is right for you?

Mocs agree: Living on campus is the most rewarding experience of their college lives. And when you live in one of our 16 communities, you'll be in the middle of the action!

### Submit your enrollment deposit at [flsouthern.edu/enroll](http://flsouthern.edu/enroll)

Then, share your housing preferences when completing the Housing Form. Take these steps before **April 1**, and we'll pair you with a roommate on Match Day!

*Already deposited, great. We can't wait to welcome you to campus!*

